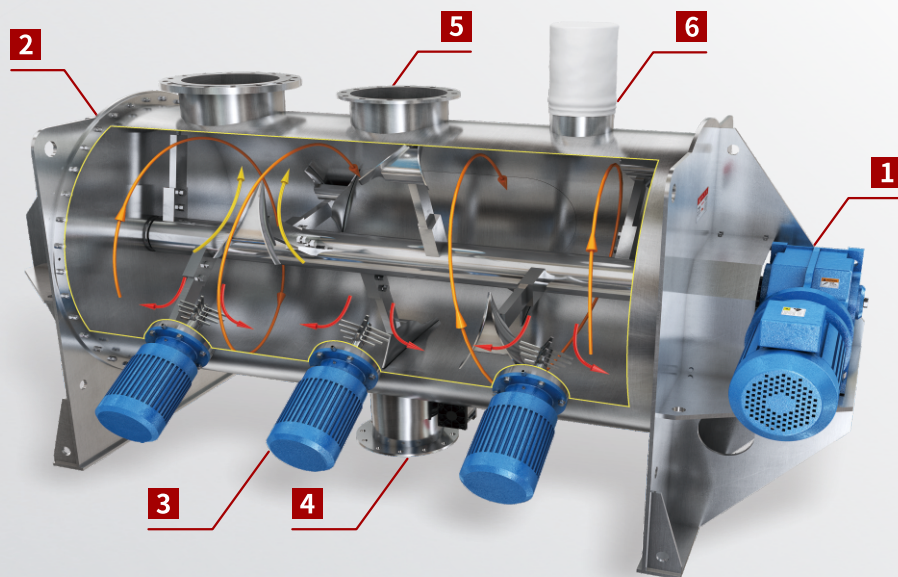


# Ploughshare Mixer

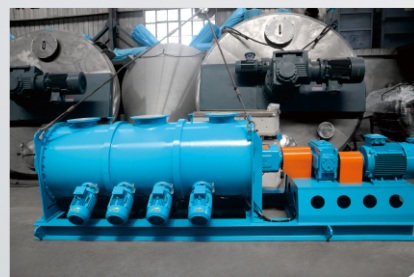
*Ideal mixing quality for versatile material process application*



- 1 Drive Unit**  
(Motor, Gear Reducer)
- 2 Mixing Elements**  
(Plough Shovel)
- 3 High Speed Chopper and Motor**
- 4 Standard Pneumatic Discharge Valve**
- 5 Feed Port**
- 6 Vent Port**

Ploughshare Mixer consists of horizontal & cylindrical drum vessel, plough shaped shovel agitator, drive unit and chopper. The mixing elements create a mechanical fluidized bed mixing actions to hurl materials away from the wall of vessel into free space in crisscross direction and inversely back again. A fluid bed generated mechanically in this way, whereby the raw material is constantly involved in the mixing process, ensures maximum mixing intensity at even the highest feed rates and shortest residence times and allows addition of liquids.

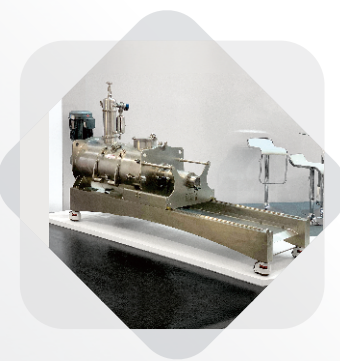
**Option:** Vacuum, Jacket (heating/cooling), Surface Coating, Anti-wearing, Liquid Spray, Hazardous Area etc.





## Benefits

- ✓ Perfect mixing result within short mixing time
- ✓ High speed chopper for de-agglomeration requirement
- ✓ High Shearing Mixing in Movement Zone
- ✓ Heating/cooling jacket and vacuum design is optional
- ✓ Flexible Design for different applications and industries
- ✓ Batch or continuous process
- ✓ Center or Big bomb-bay discharge valve is optional

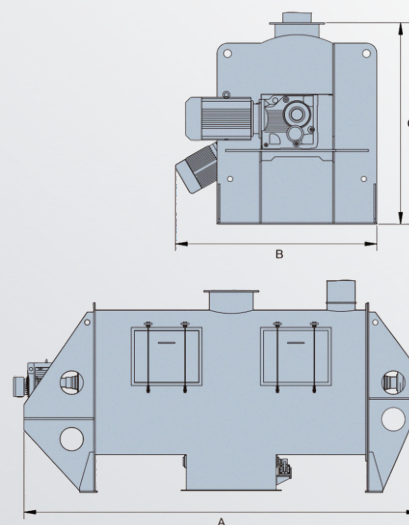


## Application

- ✓ Dry Powder
- ✓ Dry Powder with liquid additives
- ✓ Slurry
- ✓ Paste and Wet

## Technical Data

Gross Volume	Effective Volume	Overall Dimension			Shaft Speed	Approx. Weight
		A	B	C		
100L	40-60L	1400	950	1100	200	400
300L	120-180L	1900	1100	1300	162	700
500L	200-300L	2000	1250	1500	145	865
1000L	400-600L	3200	1500	1900	134	2000
1500L	600-900L	3600	1600	1950	126	2300
2000L	800-1200L	3800	1700	2050	121	3100
3000L	1200-1800L	4200	1900	2300	106	3800
4000L	1600-2400L	4500	2100	2400	94	4800
5000L	2000-3000L	4800	2150	2600	85	5900
6000L	2400-3600L	5000	2250	2650	78	6400
8000L	3200-4800L	5600	2350	2650	67	7900
10000L	4000-6000L	6100	2550	2900	60	10500
12000L	4800-7200L	6700	2650	2820	54	13300
15000L	6000-9000L	7300	2750	2970	48	14600
20000L	8000-12000L	8100	2900	3162	38	18900
25000L	10000-15000L	8500	3100	3250	30	20000
30000L	12000-18000L	9000	3300	3300	25	23000



- Above information is our standard type, we can make customized design if necessary.
- The construction material can be mild steel, stainless steel 304/316L, duplex steel, hard alloy steel to meet different application.
- The mixer can be atmospheric design, pressure vessel design (GB150, ASME, PED), FDA hygiene design and other complicated requirement.

## SHUANGLONG GROUP CO., LTD

- 📍 Add: No. 299 Delixi Rd, Nanxiang Industrial Zone, Jiading District, Shanghai
- 🌐 Website: [www.shuanglong.com](http://www.shuanglong.com)
- ✉ Email: [info@mixertec.com](mailto:info@mixertec.com)
- ☎ Phone: +86-21-69921725

